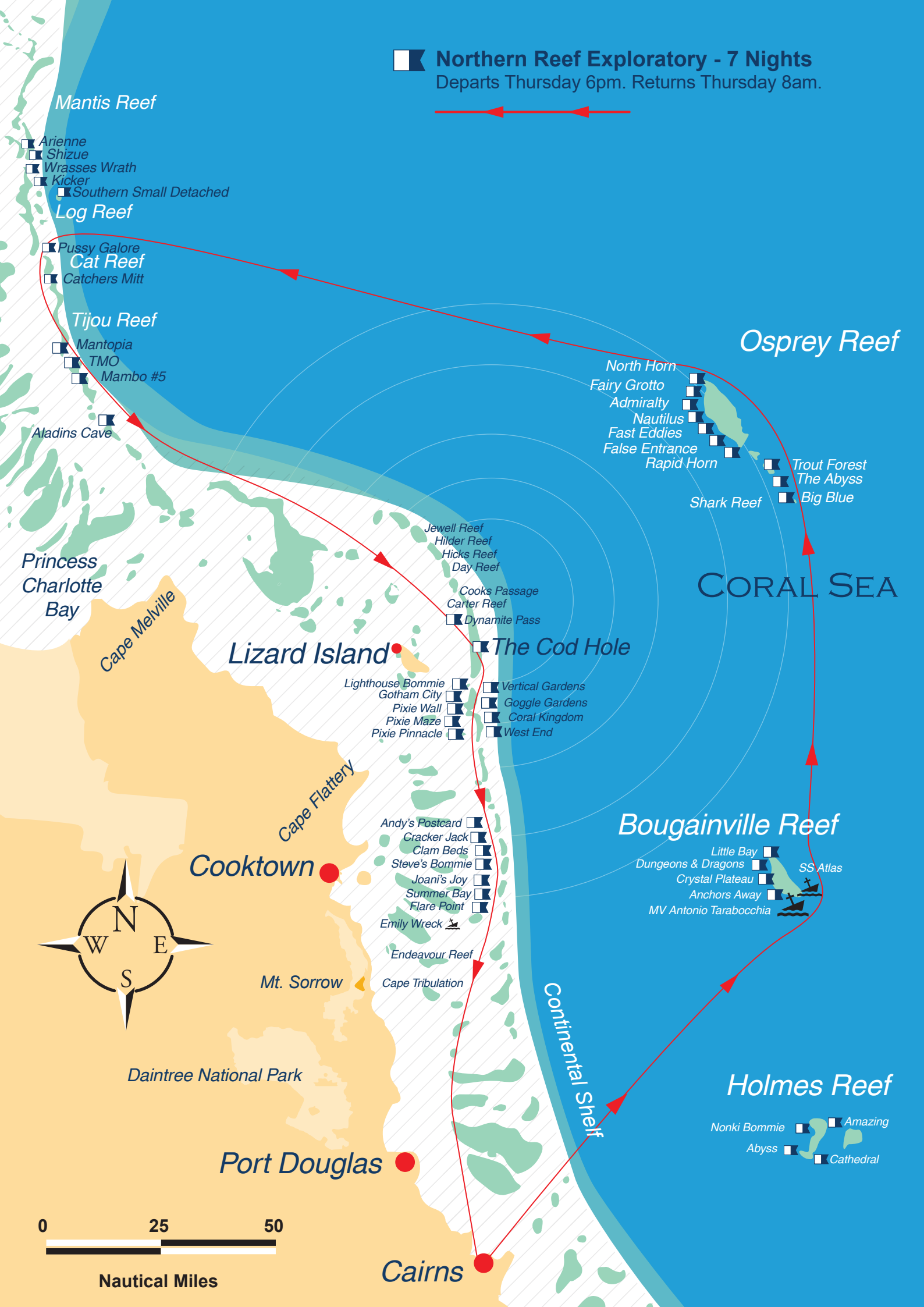


**Northern Reef Exploratory - 7 Nights**  
 Departs Thursday 6pm. Returns Thursday 8am.



**Mantis Reef**

- ☐ Arienne
- ☐ Shizue
- ☐ Wrasses Wrath
- ☐ Kicker
- ☐ Southern Small Detached

**Log Reef**

- ☐ Pussy Galore
- ☐ Cat Reef
- ☐ Catchers Mitt

**Tijou Reef**

- ☐ Mantopia
- ☐ TMO
- ☐ Mambo #5

Aladins Cave

Princess Charlotte Bay

Cape Melville

**Lizard Island**

- ☐ Lighthouse Bommie
- ☐ Gotham City
- ☐ Pixie Wall
- ☐ Pixie Maze
- ☐ Pixie Pinnacle
- ☐ Vertical Gardens
- ☐ Goggle Gardens
- ☐ Coral Kingdom
- ☐ West End

Cape Flattery

**Cooktown**

- ☐ Andy's Postcard
- ☐ Cracker Jack
- ☐ Clam Beds
- ☐ Steve's Bommie
- ☐ Joani's Joy
- ☐ Summer Bay
- ☐ Flare Point
- ☐ Emily Wreck

Mt. Sorrow

- ☐ Endeavour Reef
- ☐ Cape Tribulation

Daintree National Park

**Port Douglas**

**Cairns**

**Osprey Reef**

- ☐ North Horn
- ☐ Fairy Grotto
- ☐ Admiralty
- ☐ Nautilus
- ☐ Fast Eddies
- ☐ False Entrance
- ☐ Rapid Horn

- ☐ Trout Forest
- ☐ The Abyss
- ☐ Big Blue

Shark Reef

**CORAL SEA**

**The Cod Hole**

- ☐ Jewell Reef
- ☐ Hilder Reef
- ☐ Hicks Reef
- ☐ Day Reef
- ☐ Cooks Passage
- ☐ Carter Reef
- ☐ Dynamite Pass

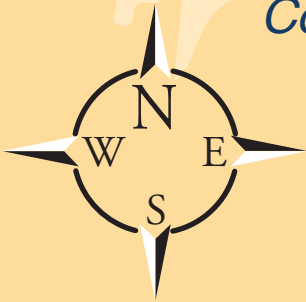
**Bougainville Reef**

- ☐ Little Bay
- ☐ Dungeons & Dragons
- ☐ Crystal Plateau
- ☐ Anchors Away
- ☐ MV Antonio Tarabocchia
- ☐ SS Atlas

Continental Shelf

**Holmes Reef**

- ☐ Nonki Bommie
- ☐ Amazing
- ☐ Abyss
- ☐ Cathedral



0 25 50



Nautical Miles