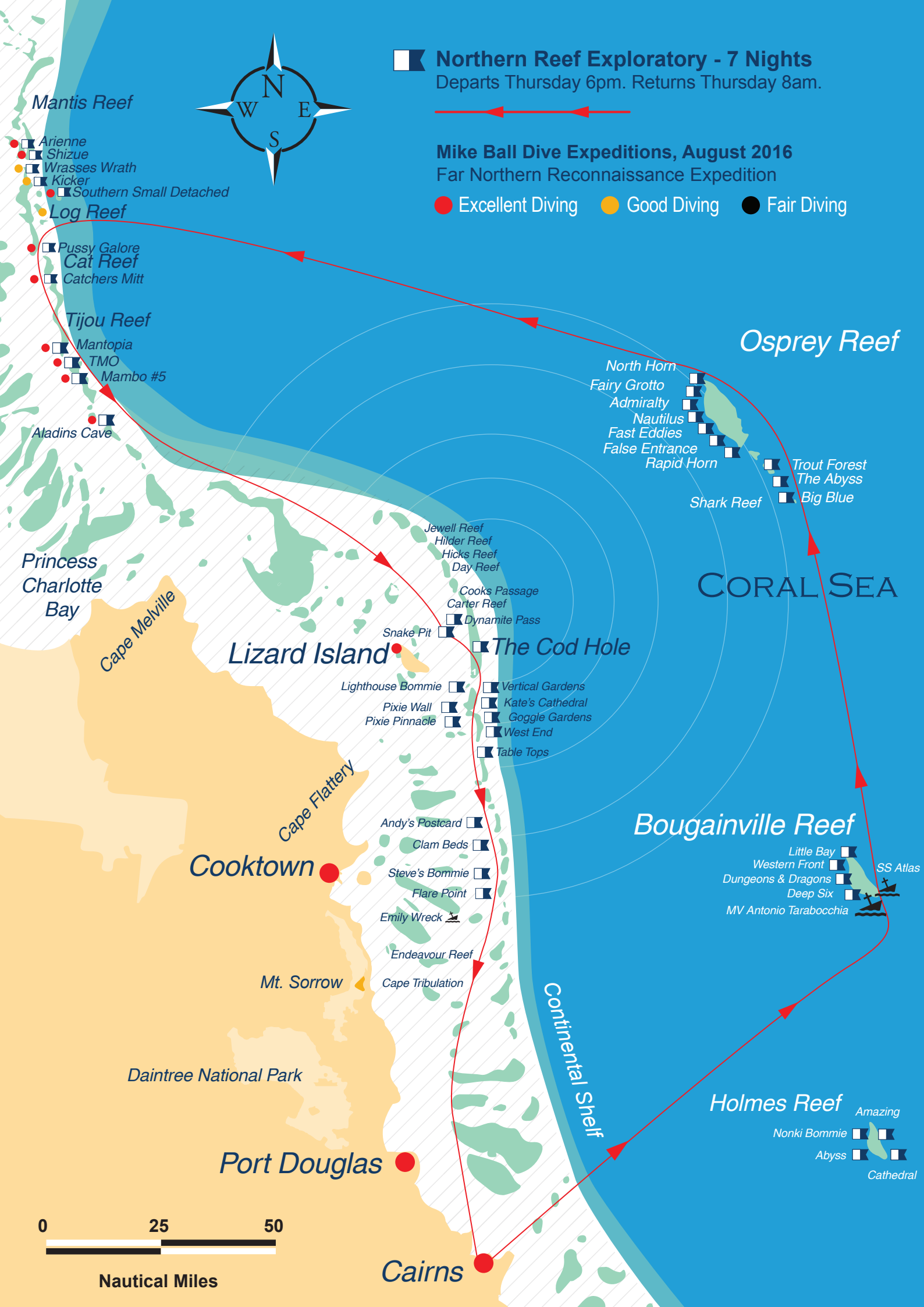


Northern Reef Exploratory - 7 Nights
Departs Thursday 6pm. Returns Thursday 8am.

Mike Ball Dive Expeditions, August 2016
Far Northern Reconnaissance Expedition

● Excellent Diving ● Good Diving ● Fair Diving



Mantis Reef

- Arienne
- Shizue
- Wrasses Wrath
- Kicker
- Southern Small Detached

● Log Reef

- Pussy Galore
- Cat Reef
- Catchers Mitt

Tijou Reef

- Mantopia
- TMO
- Mambo #5

Aladins Cave

Princess Charlotte Bay

Cape Melville

Lizard Island

- Jewell Reef
- Hilder Reef
- Hicks Reef
- Day Reef
- Cooks Passage
- Carter Reef
- Dynamite Pass
- Snake Pit

The Cod Hole

- Lighthouse Bommie
- Pixie Wall
- Pixie Pinnacle
- Vertical Gardens
- Kate's Cathedral
- Goggle Gardens
- West End
- Table Tops

Cape Flattery

Cooktown

- Andy's Postcard
- Clam Beds
- Steve's Bommie
- Flare Point
- Emily Wreck

Mt. Sorrow

- Endeavour Reef
- Cape Tribulation

Daintree National Park

Port Douglas

Cairns

Osprey Reef

- North Horn
- Fairy Grotto
- Admiralty
- Nautilus
- Fast Eddies
- False Entrance
- Rapid Horn

- Trout Forest
- The Abyss
- Shark Reef
- Big Blue

CORAL SEA

Bougainville Reef

- Little Bay
- Western Front
- Dungeons & Dragons
- Deep Six
- MV Antonio Tarabocchia
- SS Atlas

Continental Shelf

Holmes Reef

- Amazing
- Nonki Bommie
- Abyss
- Cathedral

0 25 50

Nautical Miles